

PATCH MANAGEMENT | software service

Protect Desktops and Laptops from Security Threats



Gartner estimates that over 90% of attacks exploit vulnerabilities that already have a patch available. Patch management is critical to keeping corporate and remote computing infrastructures safe from viruses and hackers. IT organizations must continuously monitor and assess security vulnerabilities—or suffer the consequences of downtime, reduced employee productivity, and lost revenue.

The Everdream Patch Management software service is part of the Uptime Services Suite, on-demand software and managed services designed to work together to keep your desktop and laptop PCs up and running by providing ironclad protection against security breaches, hackers, and lost data.

Maximum Security through Patch Visibility and Control

The Patch Management software service enables the distribution of Microsoft Windows and Office patches consistent with IT and business policies. Ideally suited to deliver patch management services to both corporate and remote systems, Everdream Patch Management gives IT organizations greater control over and visibility into the patching process.

Advantages

- > Rapid deployment
- > Flexible patching options (e.g. automated, targeted, multi-patch)
- > Centralized management and reporting
- > Reduced burden on IT
- > Transparent to end users

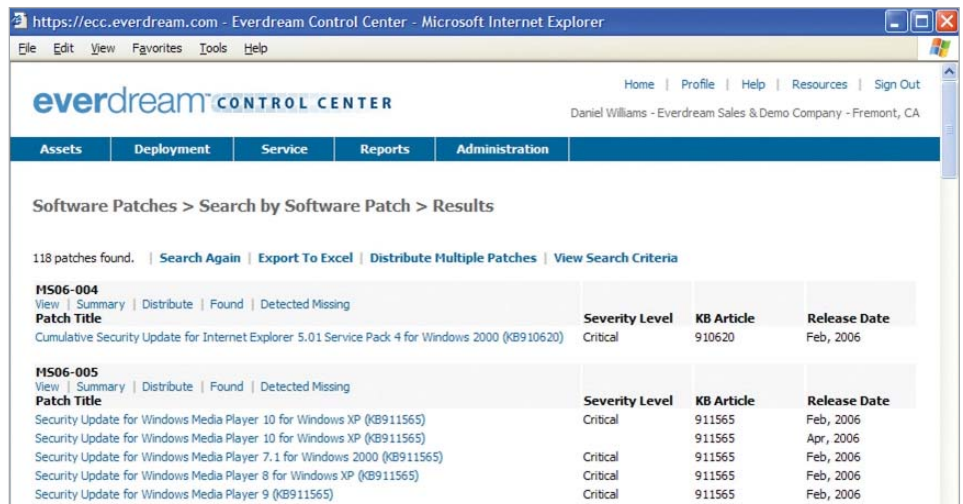
AUTOMATE AND CENTRALIZE PATCH MANAGEMENT

Everdream Patch Management automates and centralizes the process to deliver new patches to both corporate and remote users in a uniform, simple, and standard approach over the Internet. This saves time and money, and improves patch distribution reliability conserving critical IT resources.

Advantages

- > Requires no infrastructure investment as Everdream-hosted WSUS servers are utilized to stage and deliver patches. These always-available servers are accessible over the Internet using a web browser.

Everdream Patch Management delivers greater visibility and control into the patch process along with more efficient patching such as multi-patch management.





- > Automatically delivers approved patches using immediate or delayed distribution options.
- > Provides centralized configuration, management and reporting of patches for all systems via a single, web-based management console.

UTILIZE FLEXIBLE TARGETING OPTIONS

With Everdream Patch Management, IT personnel gain granular control over the distribution of critical software patches, letting IT automatically protect a majority of systems from the latest security vulnerabilities while identifying those systems that require non-standard targeted updates.

Advantages

- > Protects PCs immediately via the automated deployment of patches to some or all systems.
- > Enables IT to tailor the patch process for their unique business needs via targeted deployment of patches to specific systems or groups of systems.
- > Reduces the burden on IT organizations through the distribution of Everdream-created “packages” of Microsoft patches.

ACHIEVE SUPERIOR MULTI-PATCH MANAGEMENT

Everdream Patch Management enables the delivery of multiple patches at one time and permits the delivery of incremental changes for new patches to minimize network bandwidth requirements. This reduces the time required to deploy security patches throughout the company.

Advantages

- > Distributes multiple patches at one time through integration with Microsoft Windows Server Update Services (WSUS).
- > Minimizes reboots via the Q-chaining of patches.
- > Ensures that only unique, needed files are downloaded with each update via binary delta compression on patch packages.

STAY AHEAD OF THE LATEST VULNERABILITIES

Unique to Everdream Patch Management is the continuous monitoring, analysis and reporting of the latest critical patch information by the Everdream team. This saves valuable time for IT administrators as they no longer need to perform this time consuming task.

Advantages

- > Delivers criticality assessments on new potential threats as a result of Everdream monitoring leading sources of vulnerability information.
- > Keeps IT administrators up-to-date through the notification of newly discovered critical threats.
- > Protects against critical vulnerabilities via Everdream’s recommended course of action.

IMPROVE USER PRODUCTIVITY

Everdream Patch Management utilizes the latest techniques to ensure users can receive patch updates to protect their systems without disruptions. This improves user productivity while ensuring their systems are protected.

Advantages

- > Securely transfers all patches via 128-bit SSL encryption.
- > Alerts users to reboots giving them time to save valuable work.
- > Allows users to postpone installations until a more convenient time.
- > Provides Checkpoint Restart so partially completed downloads can be automatically resumed on intermittent or broken connections.
- > Throttles download rates to minimize bandwidth usage.

Technical Requirements

- > No server infrastructure required
- > No VPN connections required
- > Internet connection (56K or faster)
- > Internet Explorer 5.5 and above
- > Supported operating systems: Windows 98, ME, NT, 2000, XP, and Vista
- > Requires 128MB RAM

Powered by Everdream’s Management Platform

Everdream Patch Management is just one of Everdream’s services which are powered by its industry-leading on-demand desktop management platform and its client-based agent architecture. Everdream’s multi-tenant platform delivers the latest capabilities to customers through a centralized, web-based management console at a fraction of the cost and time it takes traditional software vendors. It operates in a fully redundant SAS-70 Type II compliant data center, maintaining system and network security at all times.

For more information on the Everdream Patch Management service, visit us at www.everdream.com.

everdream®

6591 Dumbarton Circle, Fremont, CA 94555

Tel 888.307.7299 Fax 510.818.5510

www.everdream.com

Everdream and related Everdream Corporation logos are registered trademarks of Everdream Corporation. Copyright©2007 Everdream. All rights reserved. All other company, product and brand names are trademarks of their respective owners.