

DATA ENCRYPTION | managed service

Ensure organizational protection of data on all PCs



According to FBI statistics, a laptop is lost or stolen every 100 seconds and less than two percent are ever recovered. What's even more frightening is the fact that many laptops contain sensitive data such as company information (financial / operating results, intellectual property, business strategies, etc.), customer information (customer names, payment records, credit information, etc.), and identity information (Social Security numbers, account information / passwords, addresses, etc.). Even a single data loss can result in significant costs including negative publicity, regulatory noncompliance, and legal liability. This makes having a secure, reliable, and cost-effective data encryption solution critical to the success of your business.

The Everdream Data Encryption managed service is part of the Uptime Services Suite, on-demand software and managed services designed to work together to keep your desktop and laptop PCs up and running by providing ironclad protection against security breaches, hackers, and lost data.

Everdream Data Encryption provides maximum security of critical business information while being transparent to end users – green file names indicate that the data is encrypted.

Protect Mission Critical Business Information

The Data Encryption managed service intelligently encrypts and protects data on a lost or stolen computer to prevent its compromise or misuse. A comprehensive and multi-layered approach to PC data security, Everdream Data Encryption effectively secures data even when the PC is off-line. Most importantly, the Data Encryption service ensures organizational control of that data even when the user has lost control of the device.

Advantages

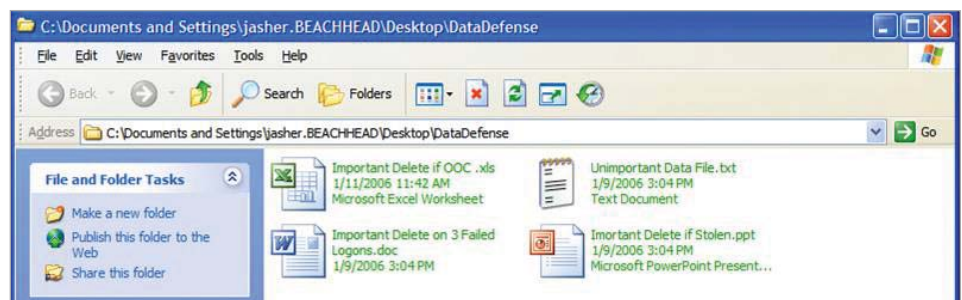
- > Maximum data protection, both online and offline
- > Transparent to end users
- > Eliminates administrative burden
- > Flexible data protection to fit your business

PREVENT UNAUTHORIZED DATA USE

Through Everdream's unique data encryption technology and the expertise of the Everdream Managed Services team, you will gain the peace-of-mind that your mission critical business information is protected from any threat.

How It Works:

- > The Everdream team deploys the Data Encryption software agent to each PC to be protected.
- > The agent automatically finds and encrypts all critical data with either 256 AES or 256 3DES adhering to government specifications (DoD 5220, FIPS 140).
- > Automated online and offline policies detect user behaviors which are inconsistent with expected norms and provide an indicator that unauthorized persons may be attempting to access the device.
- > If one of the automated policies is triggered, the encryption key will be eliminated thereby rendering the PC's data inaccessible.
- > If a policy was activated by accident, the Everdream Managed Services team restores the key so that all data access on the PC is restored.





- > In the event of a lost or stolen laptop, the Everdream Managed Services team swings into action by instructing the Data Encryption agent to eliminate the encryption key as soon as the PC connects to the Internet. This protective step augments the local policies already on the PC which remain active regardless of whether the PC is connected to the Internet or not.
- > The Everdream Managed Services team can also retrieve location-based information for a missing laptop using network traces, network configuration data, and user activity. This information can be provided to law enforcement to help in locating the laptop and prosecuting the perpetrator.

MAXIMIZE END USER TRANSPARENCY

Everdream Data Encryption provides silent mobile policy enforcement which removes compliance obligations from the user and returns the control and safeguarding of data to those who are responsible for it — the business leaders.

Advantages

- > No end user involvement is necessary to deploy the Data Encryption agent and automatically encrypt the PC's critical data.
- > Ongoing encryption is completely transparent to users so they need not be trained or informed of its use.
- > PC performance is not impacted making the service transparent to users unlike full disk encryption solutions.
- > Automated online and offline policies eliminate the compliance burden from end users while securing the data.

ELIMINATE THE ADMINISTRATIVE BURDEN

Everdream Data Encryption eliminates the administrative burden of ensuring PCs and their data are protected. Through its innovative Software-as-a-Service (SaaS) technology and the expertise of the Everdream Managed Services team, Data Encryption is deployed rapidly, delivers straightforward monitoring and control, and relieves the hassle of encryption key management.

Advantages

- > Internal IT resources are not necessary as deployment and management of Everdream Data Encryption is handled remotely by the Everdream team.
- > The Everdream Managed Services team delivers easy, centralized policy management so you don't have to. This includes the policies and parameters that deliver maximum data security along with the management of encryption keys.
- > In the event that a policy is triggered due to user error or a lost, stolen, or compromised PC, the Everdream Managed Services team will take care of restoring encryption keys or ensuring that they are deleted when the lost or stolen laptop connects to the Internet.

FLEXIBLE PROTECTION

Budgetary constraints and risk analysis may dictate which systems require protection — such as laptops for executives, sales, and field employees. Everdream Data Encryption delivers optimum flexibility to control costs while maximizing protection of company data.

Advantages

- > You can protect some or all of your desktops and laptops depending on your specific business needs.
- > Policies that best fit with your business practices are set up and enforced.
- > The monthly subscription fee enables you to pay for what you use and scale its use as your business grows and changes.

Technical Requirements

- > No server infrastructure required
- > No VPN connections required
- > Internet connection (56K or faster)
- > Supported operating systems: Windows 2000 SP4 or later and XP Professional SP2 or later
- > Requires 10MB disk space and 256MB RAM

Powered by Everdream's Management Platform

Everdream Data Encryption is just one of Everdream's services which are powered by its industry-leading on-demand desktop management platform and its client-based agent architecture. Everdream's multi-tenant platform delivers the latest capabilities to customers through a centralized, web-based management console at a fraction of the cost and time it takes traditional software vendors. It operates in a fully redundant SAS-70 Type II compliant data center, maintaining system and network security at all times.

For more information on the Everdream Data Encryption service, visit us at www.everdream.com.

everdream®

6591 Dumbarton Circle, Fremont, CA 94555

Tel 888.307.7299 Fax 510.818.5510

www.everdream.com

Everdream and related Everdream Corporation logos are registered trademarks of Everdream Corporation. Copyright©2007 Everdream. All rights reserved. All other company, product and brand names are trademarks of their respective owners.